

# T-BAR ROOF ANCHOR



## WORKING AT HEIGHTS IS DANGEROUS AND IF DONE WITHOUT ADEQUATE TRAINING AND EQUIPMENT, MAY LEAD TO SEVERE INJURY OR EVEN DEATH

Reading these instructions does not constitute competent training in working at heights or working with fall arrest or travel restraint systems or products. It is your responsibility to ensure that you are competently trained to work at heights and, in particular, in the use of fall arrest or travel restraint safety systems before using this anchor.

To arrange training for working at heights in accordance with AS/NZS 1891.4 and with a particular focus on using this anchor and the Ballantyne Safety Tether Plates, call Ballantyne Safety on (07) 3357 9503 or visit [www.ballantynesafety.com.au](http://www.ballantynesafety.com.au)

### DESIGN & APPLICATION

This anchor is designed and tested to 15kN and is therefore rated as a single person fall arrest anchor under AS/NZS 1891.4. While this anchor has been designed to attain a fall arrest rating, this device should always be used with a travel restraint technique.

**THIS ANCHOR IS NOT FITTED WITH AN INTERNAL ENERGY ABSORBING DEVICE. AN ENERGY ABSORBING DEVICE MUST BE USED IN CONJUNCTION WITH THIS ANCHOR.**

This anchor IS suitable for:

- users who are trained in height safety
- use on roofs constructed with metal roof sheeting with a minimum base metal thickness of 0.42mm in Custom Orb and Trimdek with ridge capping secured in place with roof screws
- use in working at heights in normal climatic conditions
- installation on the opposite side of the roof from where you are working
- direct connection of personal fall-arrest equipment for a single person

This anchor IS NOT suitable for and MUST NOT be used:

- in fall arrest technique if the roof overhang exceeds 60mm
- without training in height safety
- on tiled, shingled, aluminium sheet, asbestos or decramastic roofs
- as an anchorage device for temporary horizontal life lines
- as an anchor point to lift equipment or restrain equipment
- as an abseil anchor
- or connected to by more than 1 person or more than 1 line

### THIS ANCHOR MUST NOT BE ALTERED OR MISUSED IN ANY WAY.

Alterations or misuse of this or any other device used in your safety system may result in serious injury or death.

### THIS ANCHOR IS ONLY ONE PART OF A SAFETY SYSTEM.

Other products/devices must be used in conjunction with this anchor in order to operate safely in travel restraint or fall arrest mode and such products/devices must comply with AS/NZS 1891.

### EACH ITEM USED IN YOUR SAFETY SYSTEM SHOULD COME WITH ITS OWN MAINTENANCE, SERVICING AND OPERATING INSTRUCTIONS.

You must follow each set of instructions closely and carefully.

### ANCHOR INSPECTION

Immediately before using this anchor each time it must be inspected by a competent person to ensure that it is in a perfect, serviceable condition and operates correctly. The anchor must be inspected for any worn or damaged parts, any signs of deterioration, any sharp edges, burrs, cracks or corrosion or any signs of being deformed (such as a shock loading, being dropped from a height or run over by a vehicle). The securing eye must not be damaged or distorted in any way.

### IF THE ANCHOR HAS BEEN USED TO ARREST A FALL OR UPON INSPECTION SHOWS ANY DEFECT IT MUST BE WITHDRAWN FROM SERVICE IMMEDIATELY

In addition to the above, prior to entering this anchor into service for the first time, a competent person must also inspect the anchor and give particular attention to whether the anchor has been correctly assembled and whether all component parts are present, including the instructions.

If you are in any doubt whatsoever about the condition of this anchor, remove it from service immediately and replace it. You should also have this anchor thoroughly inspected every 12 months by a competent person. This inspection should be completed and recorded in accordance with AS/NZ 1891.4. **YOUR LIFE MAY DEPEND ON YOUR EQUIPMENT.**

The user should be fully aware of its history (use, storage, inspections etc). If this equipment is not for personal use (for example, being used by multiple users) we strongly recommend a systematic approach to inspection and record keeping. This should always be carried out by a competent person.

### ROOF INSPECTION

The roof sheeting to which this anchor is to be attached should be capable of sustaining an ultimate load equal to or greater than 15kN for single point connections as per AS/NZS 1891.4.

Any signs of excessive rust, missing or loose roof nails or screws, tears or splits in the metal or damaged sheets or purlins would all be strong indicators that the area is not safe for installation.

If it is unclear to the height safety supervisor inspecting the roof that the anchorage system is not structurally adequate, it should be assessed by an engineer in accordance with AS/NZS 1891.4.

## INSTALLATION INSTRUCTIONS

**THIS ANCHOR MUST BE INSTALLED BY A COMPETENT PERSON PRIOR TO THE OPERATOR ATTACHING TO IT.**

Positioning of the anchor is crucial for safety. Height of the fall and rope stretch

should be carefully considered. Users must be adequately trained and take care to adjust the safety line length to ensure that the user will not be able to fall off any edge of the roof. AS/NZS 1891.4 sets out the safe use of anchors, in particular, safe access and

avoiding lateral swing. This anchor should never be installed on the ridge line or ridge capping of a roof.

## TO INSTALL ANCHOR FOLLOW THESE STEPS:

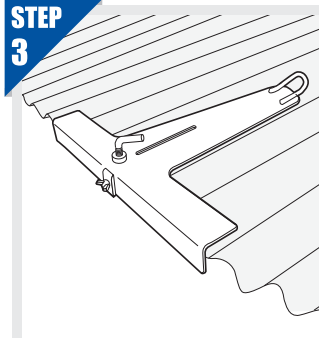
**STEP 1**

INSPECT THE ATTACHING AREA IN ACCORDANCE WITH INSTRUCTIONS ABOVE AND AS/NZS1891.4

**STEP 2**

INSPECT THE ANCHOR IN ACCORDANCE WITH INSTRUCTIONS ABOVE AND AS/NZS 1891.4

**STEP 3**



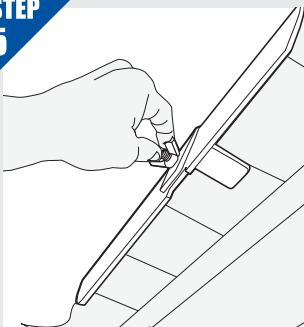
SIT THE ANCHOR ON TOP CORRUGATION OF ROOFING IRON AS SHOWN

**STEP 4**



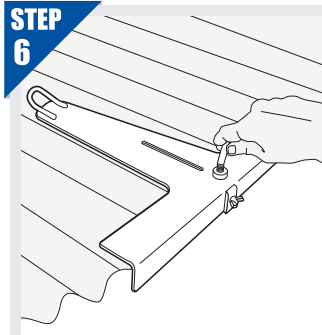
ENSURE BOTTOM TAB IS UNDER TOP CORRUGATION OF ROOFING IRON AS SHOWN

**STEP 5**



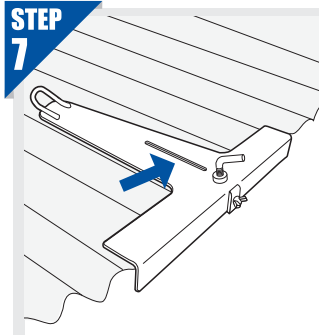
ENSURE WING NUT IS TIGHTENED TO SECURE BOTTOM TAB AS SHOWN

**STEP 6**



ENSURE L BOLT IS TIGHTENED ONTO ROOFING IRON TO CLAMP ANCHOR TO ROOFING IRON.

**STEP 7**



SCREW IN A ROOF SCREW THROUGH THE SLOTTED SECTION IN FRONT OF THE L-BOLT AS HIGHLIGHTED BY THE BLUE ARROW

**STEP 8**

DO NOT WORK OUTSIDE AN ARC OF 30 DEGREES EITHER SIDE OF THE CENTRE LINE OF THE ANCHOR TO REDUCE THE DANGER OF SWING FALL HAZARDS.

ALWAYS WORK A MINIMUM OF 2M FROM UNPROTECTED EDGE.

TO REMOVE THE ANCHOR, SIMPLY REVERSE THE PROCESS USED FOR INSTALLATION.

## MAINTENANCE

**WARNING – MAINTENANCE AND REASSEMBLY ARE TO BE CARRIED OUT BY A COMPETENT PERSON KNOWLEDGEABLE IN THE REPAIR AND MAINTENANCE OF THIS ANCHOR.**

## STORAGE

This anchor should not be subjected to unnecessary strain or pressure or to excessive heat, humidity or moisture. This anchor must be protected from contact with sharp edges, corrosive substances and other possible causes of damage.

## OBSOLESCENCE

If the anchor has been used to arrest a fall or upon inspection shows any defect it must be withdrawn from service immediately.

## DISCLAIMER & CONDITION OF USE

The user of this anchor must be competent and trained in height safety in accordance with AS/NZS 1891.4 before using this device. The owner of this anchor must ensure that anchors are properly labeled and instructions for safe use and appropriate installation guidance are supplied to

the user.

No responsibility will be accepted by Ballantyne Safety for damage, injury or death resulting from the use or misuse of this anchor. The user personally assumes the risks and responsibilities for any damage, injury or death which may result from using this anchor. If you are not in a position or able to assume this responsibility or to take these risks, do not use this anchor.